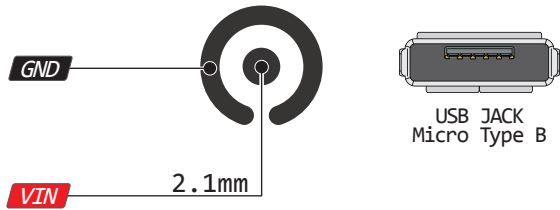
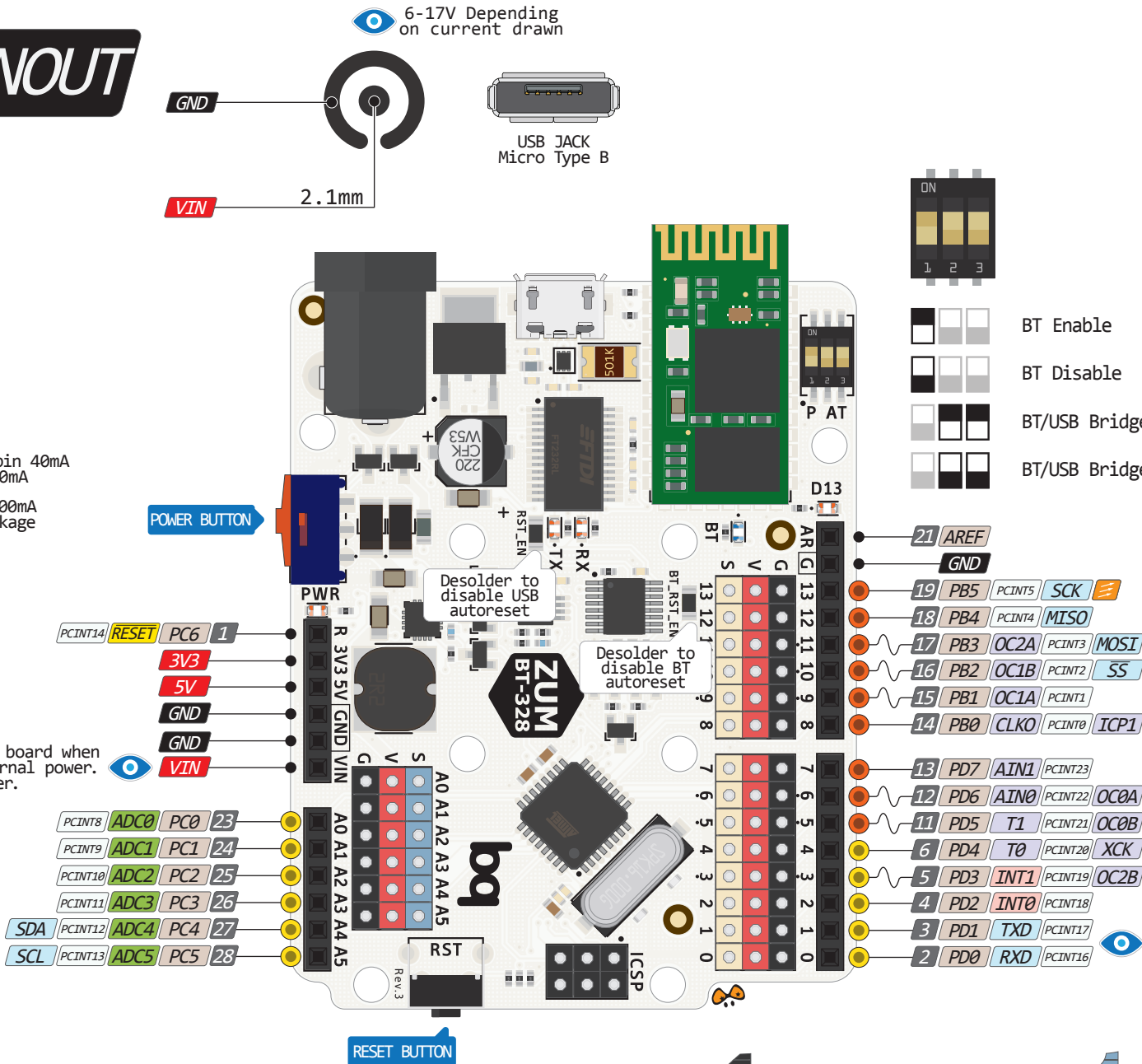


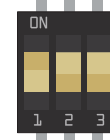
6-17V Depending on current drawn



! Absolute MAX per pin 40mA recommended 20mA
 Absolute MAX 200mA for entire package



BT/USB Bridge is used to send AT Commands to bluetooth module via USB



- BT Enable
- BT Disable
- BT/USB Bridge ON
- BT/USB Bridge OFF

- Power
- GND
- Serial Pin
- Analog Pin
- Control
- INT
- Physical Pin
- Port Pin
- Pin function
- Interrupt Pin
- PWM Pin
- Port Power

The input voltage to the board when it is running from external power. Not USB bus power.

The power sum for each pin's group should not exceed 100mA

Connected to the ATmega and bluetooth module and used for USB program and communicating with it

